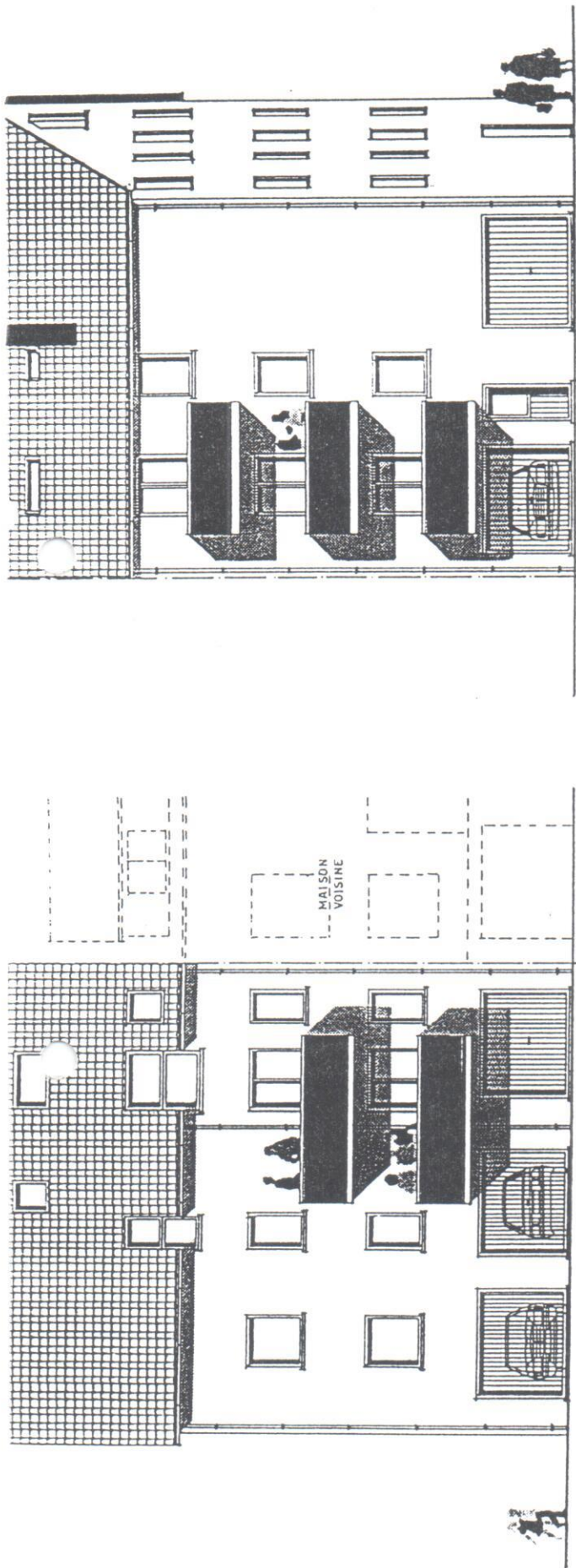


lot 1, cad. n° 209 / 2646 — 06 A. 17 c.A.

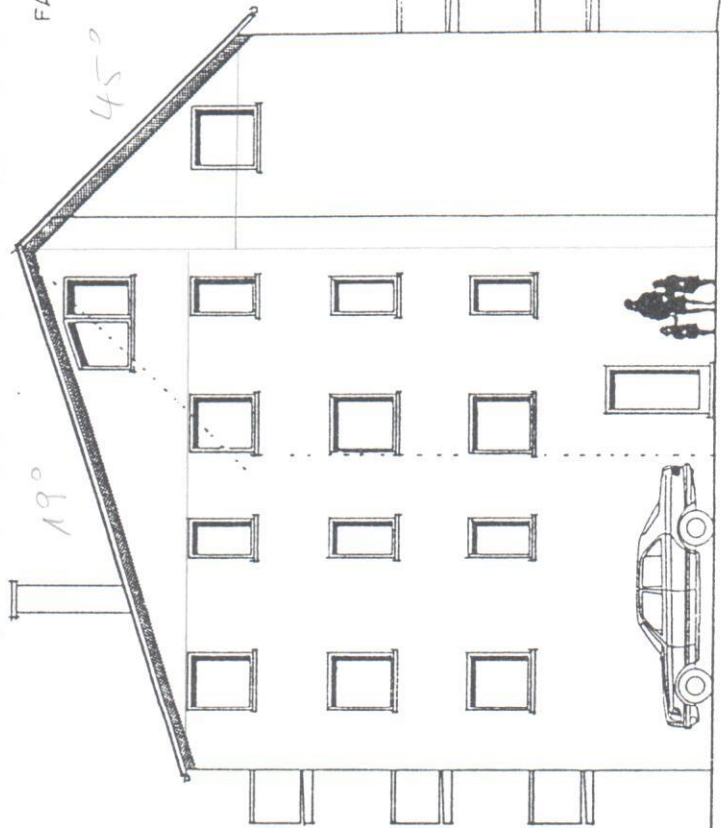
Construction d'une maison à appartements

Hand-drawn site plan of a residential plot. The plot is bounded by a 'COMUNAL' road on the left and a 'RUE D'ENTRANCE' on the right. It is divided into two main sections, (1) and (2). Section (1) contains a 'DOMAINE' (shaded area) and a 'PARKING' area. Section (2) contains a 'PARKING' area and a 'DOMAINE' (shaded area). Dimensions are provided for various boundaries and internal divisions. A compass rose indicates North (N), South (S), East (E), and West (O).



FAÇADE PRINCIPALE

FAÇADE ARRIÈRE

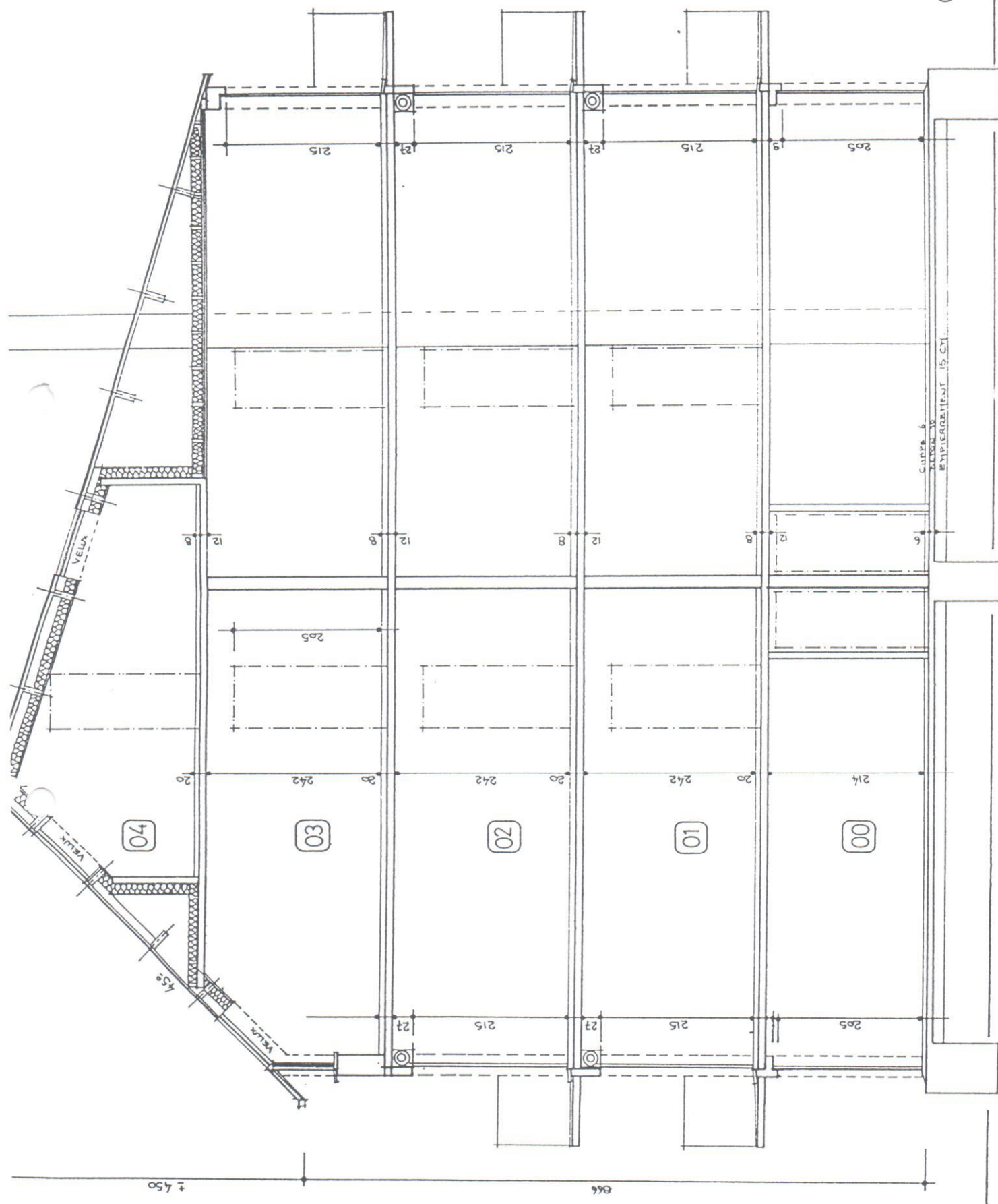


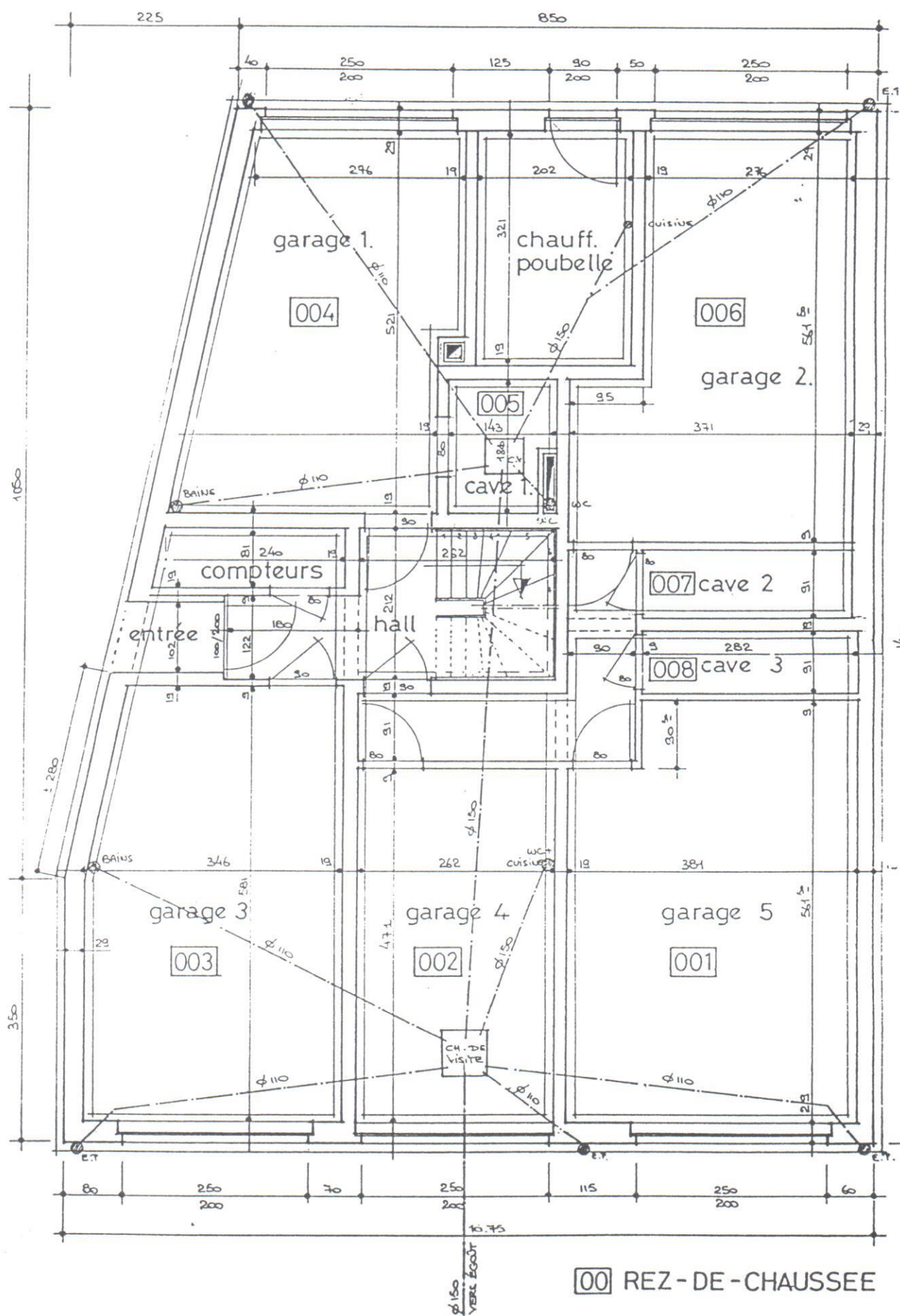
FAÇADE GAUCHE

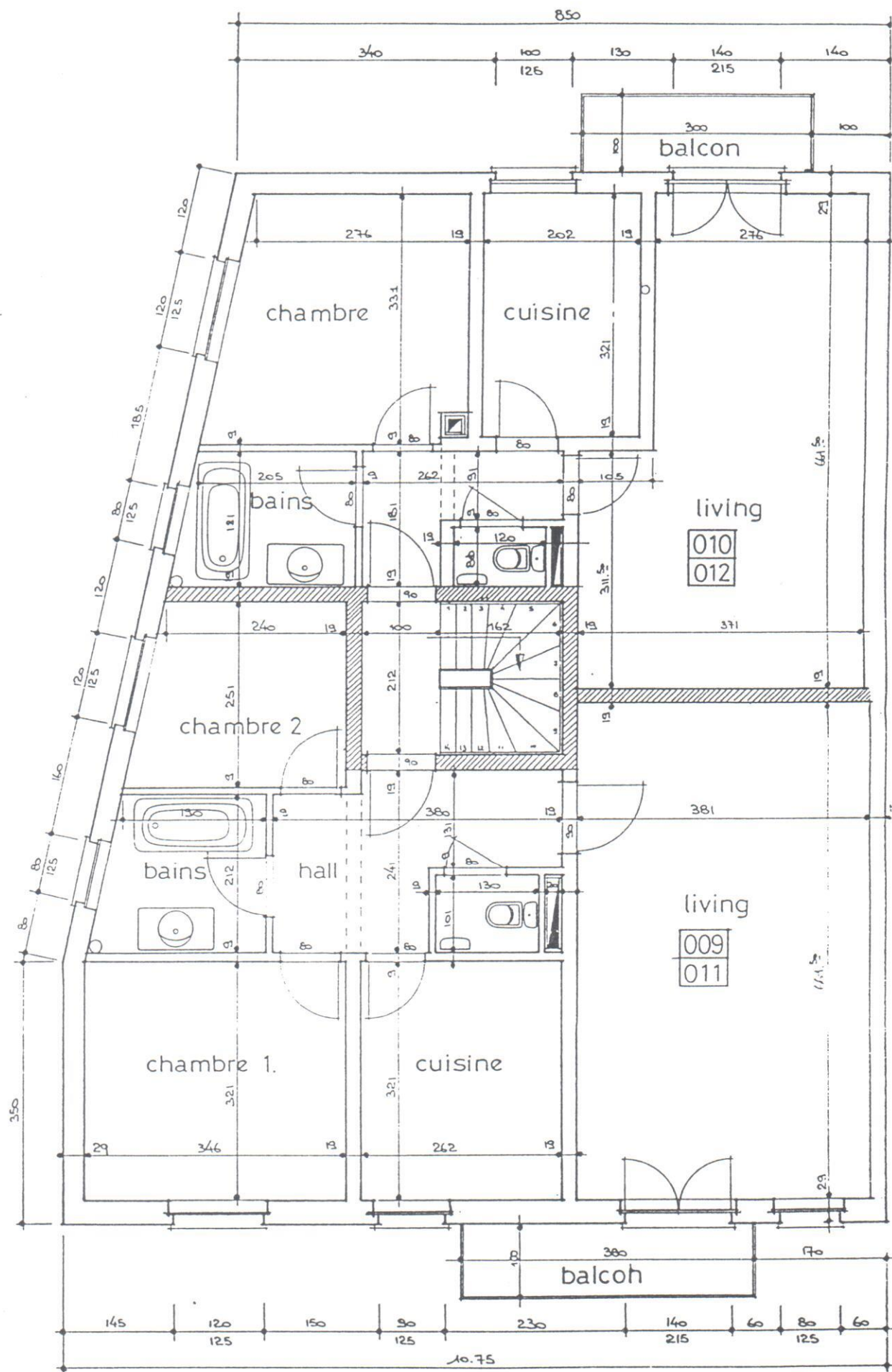
19°

45°

COUPE



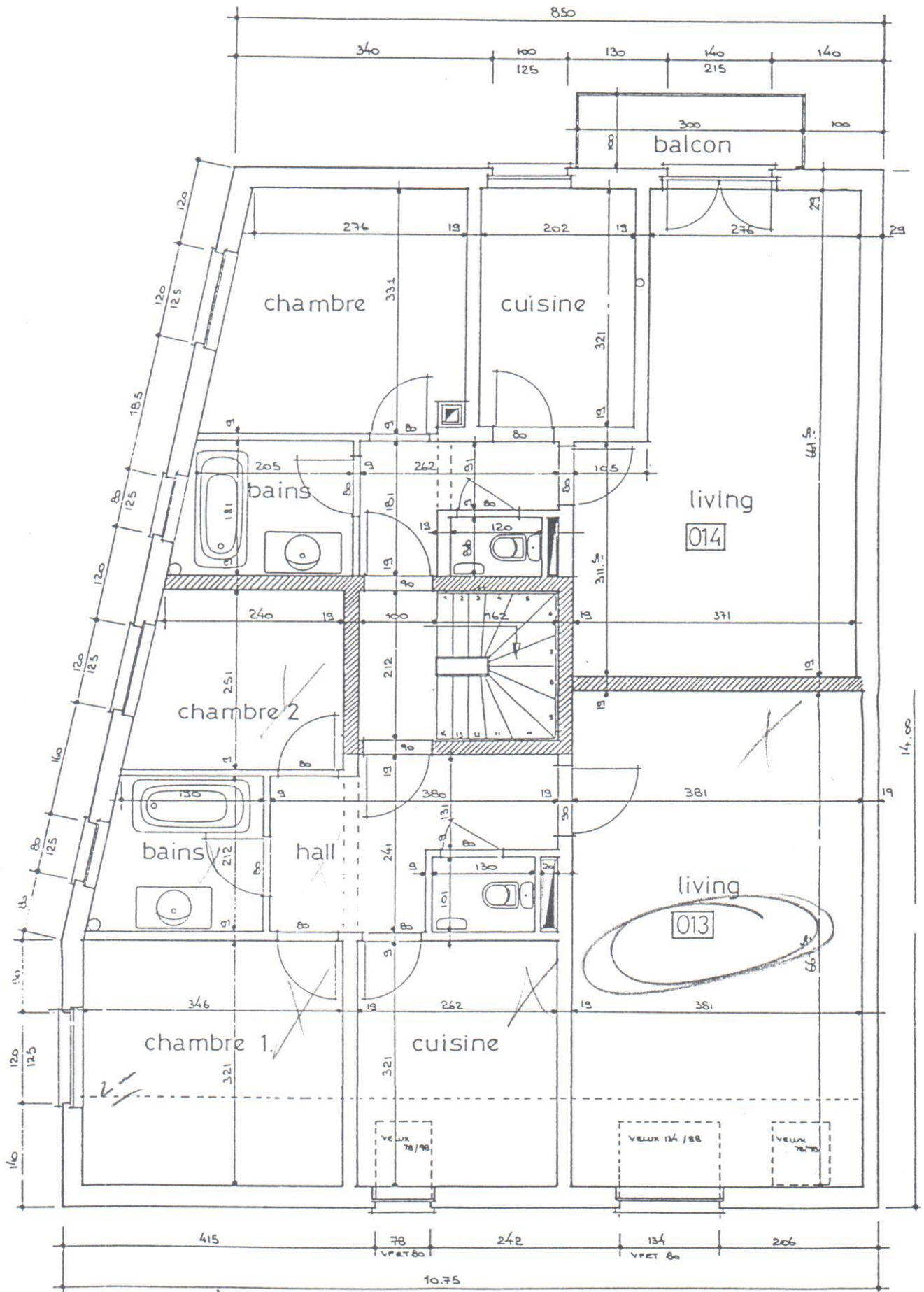




1.er. et 2èm. ETAGES

01

02



03 3ème ETAGE

